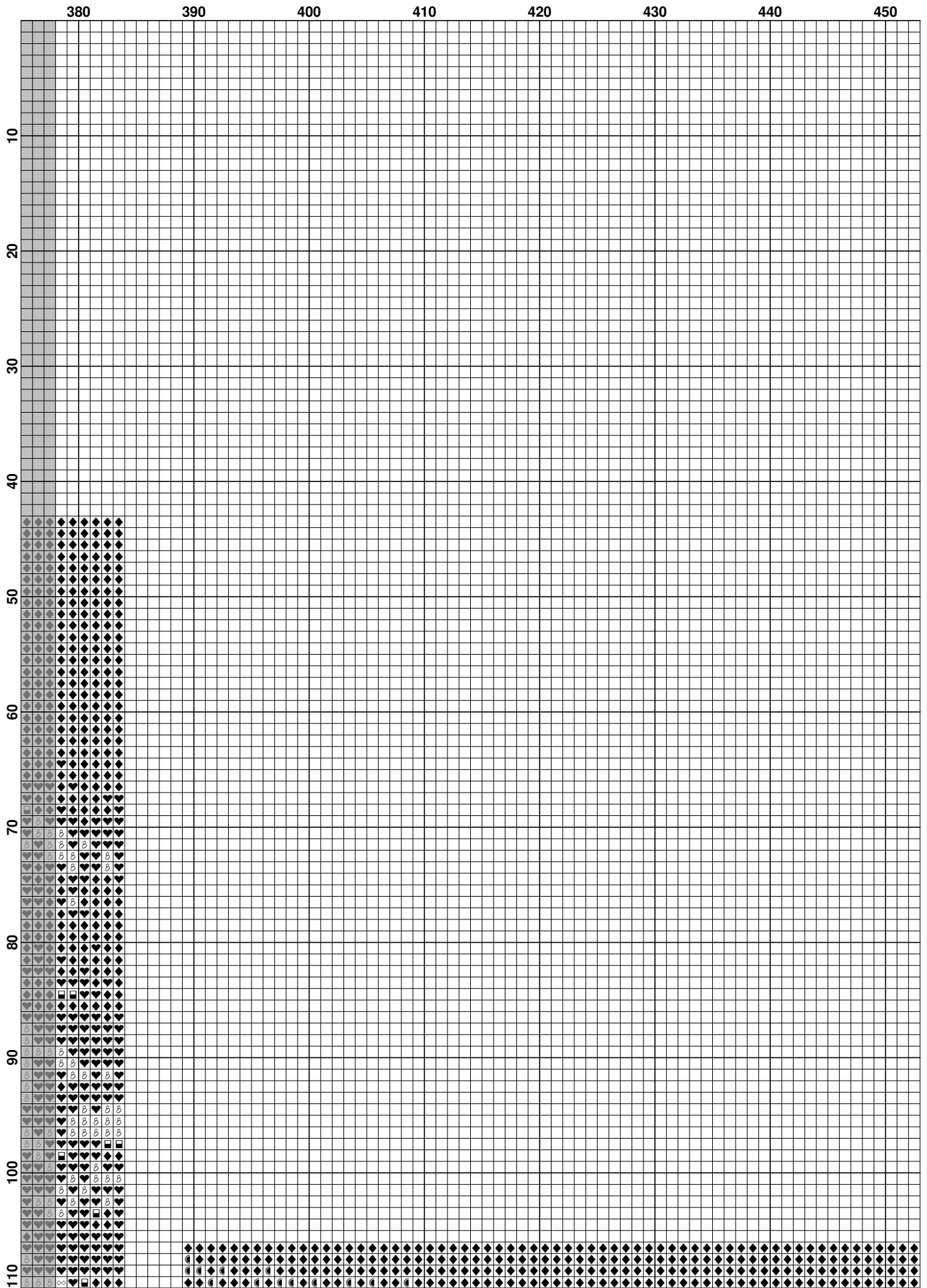
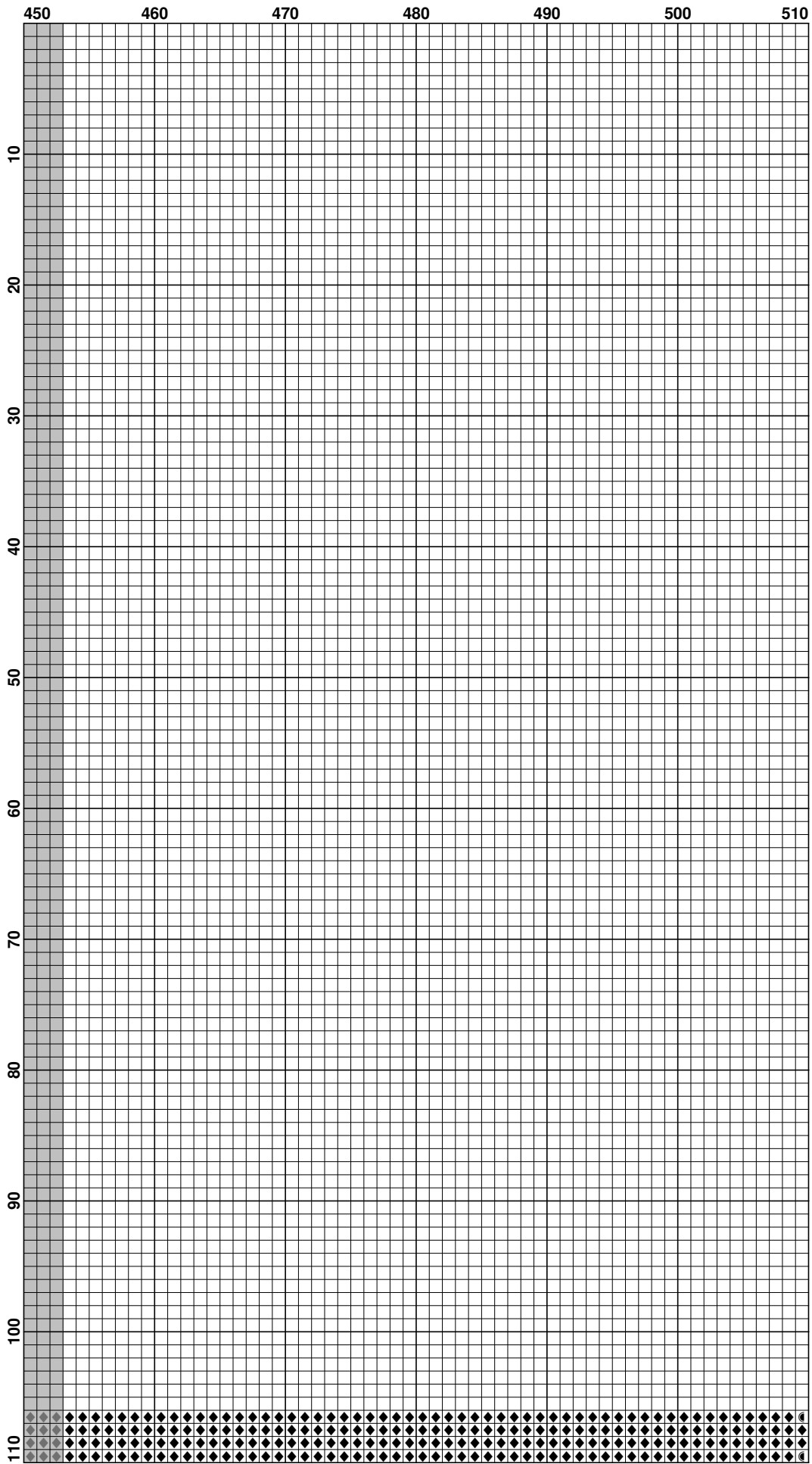
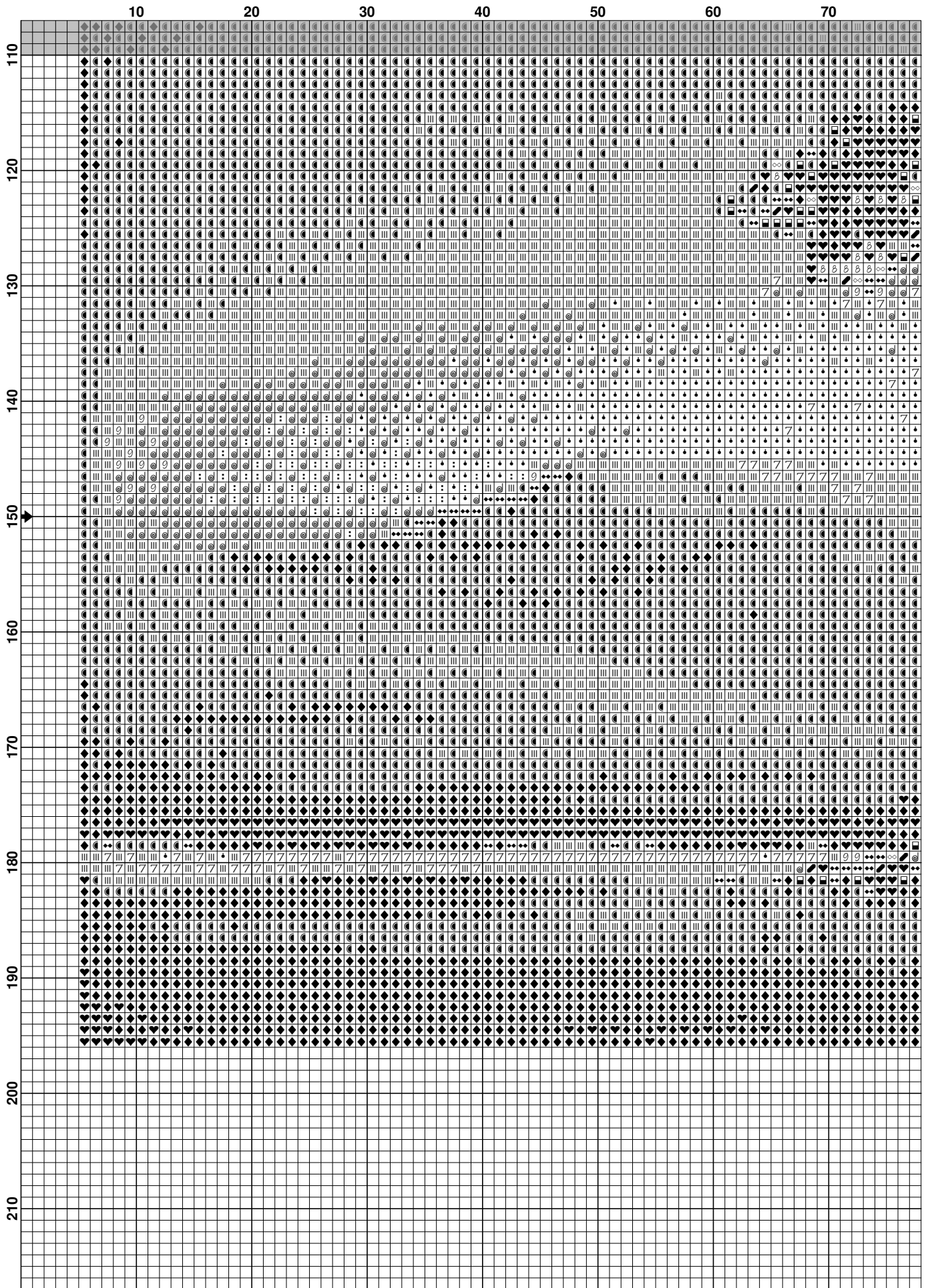


	300	310	320	330	340	350	360	370
10								
20								
30								
40								
50	◆	◆	◆	◆	◆	◆	◆	◆
60	◆	◆	◆	◆	◆	◆	◆	◆
70	◆	◆	◆	◆	◆	◆	◆	◆
80	◆	◆	◆	◆	◆	◆	◆	◆
90	◆	◆	◆	◆	◆	◆	◆	◆
100	◆	◆	◆	◆	◆	◆	◆	◆
110	◆	◆	◆	◆	◆	◆	◆	◆





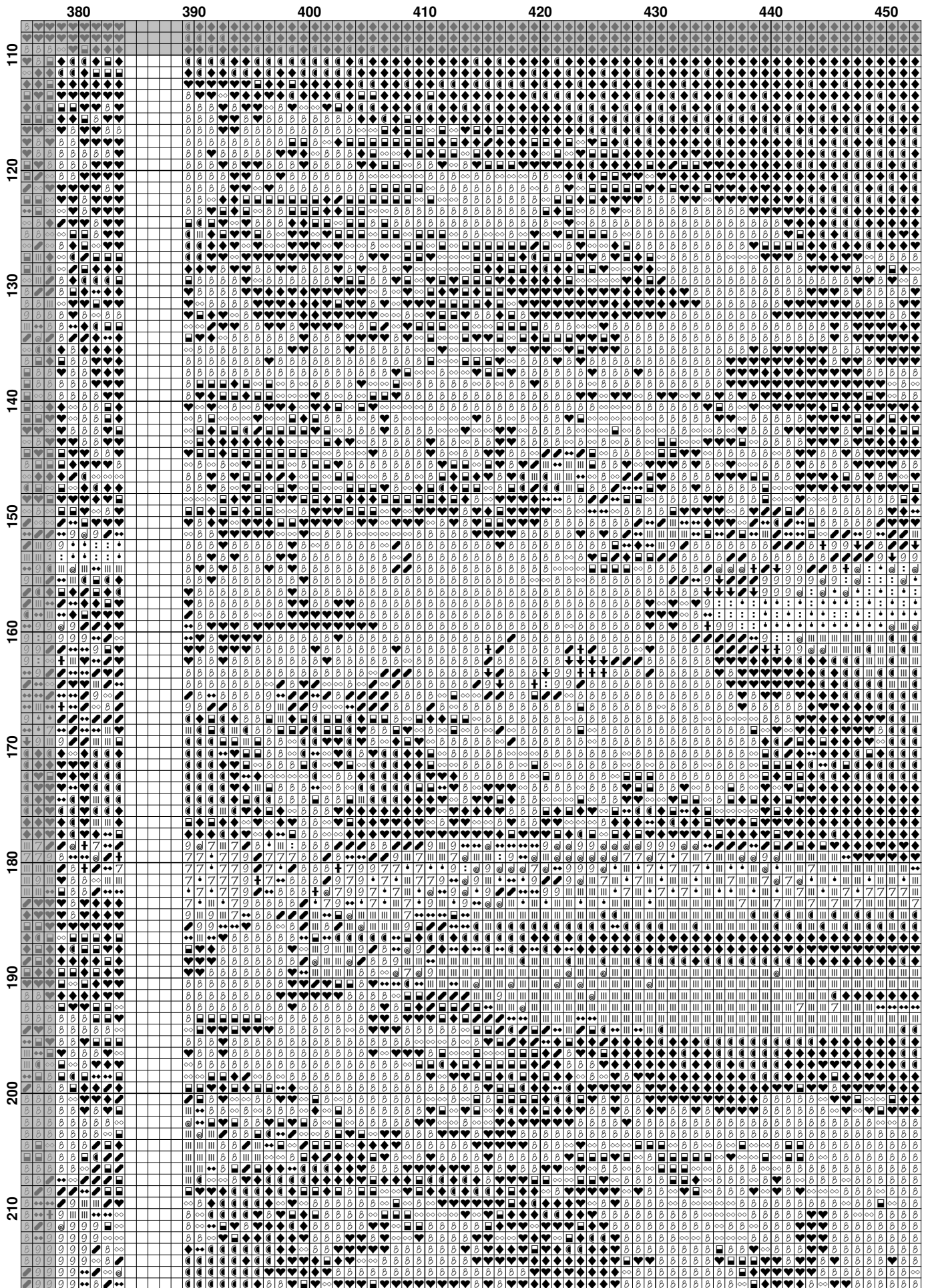


	80	90	100	110	120	130	140	150
110
120
130
140
150
160
170
180
190
200
210

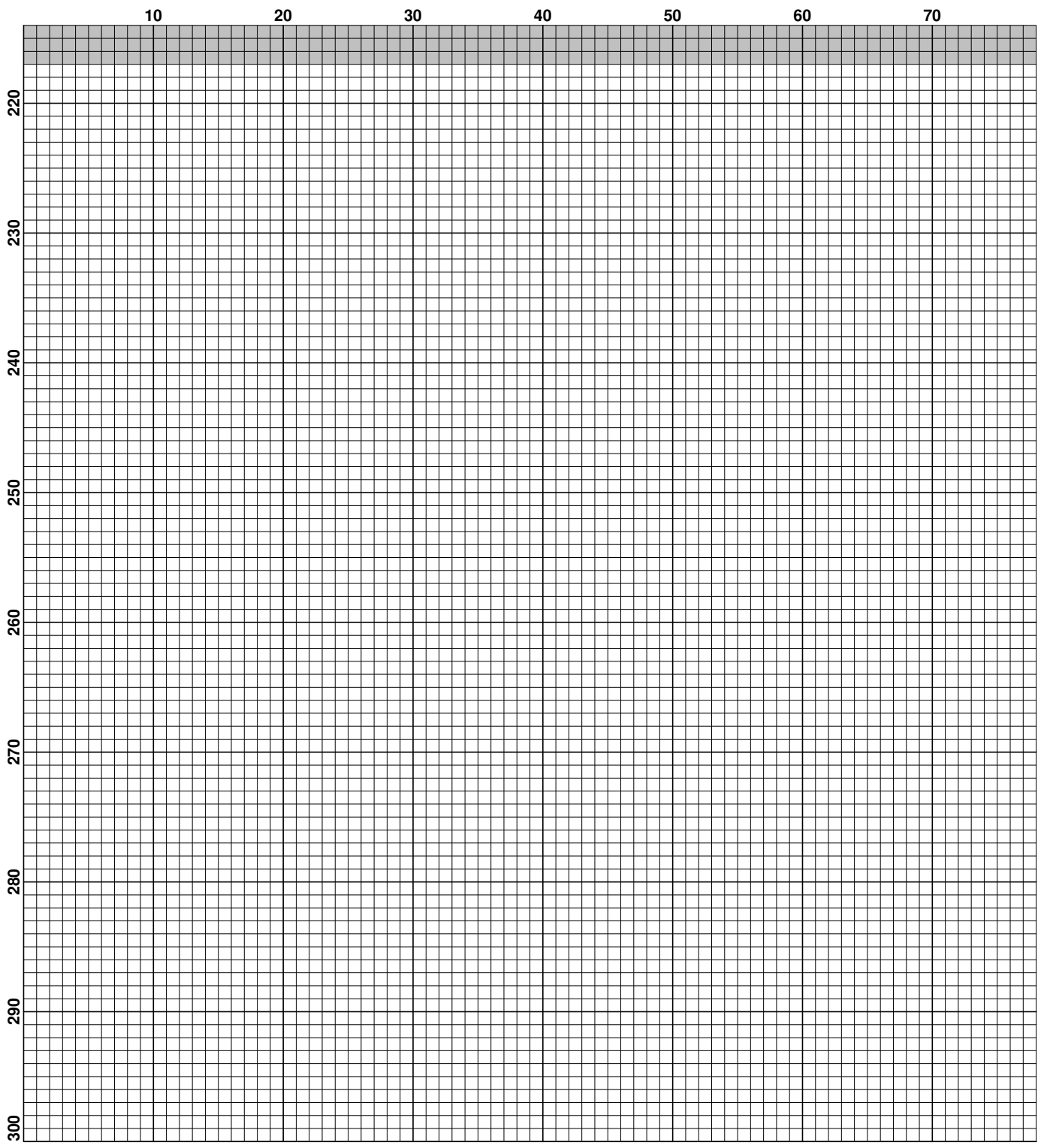
	150	160	170	180	190	200	210	220
110
120
130
140
150
160
170
180
190
200
210

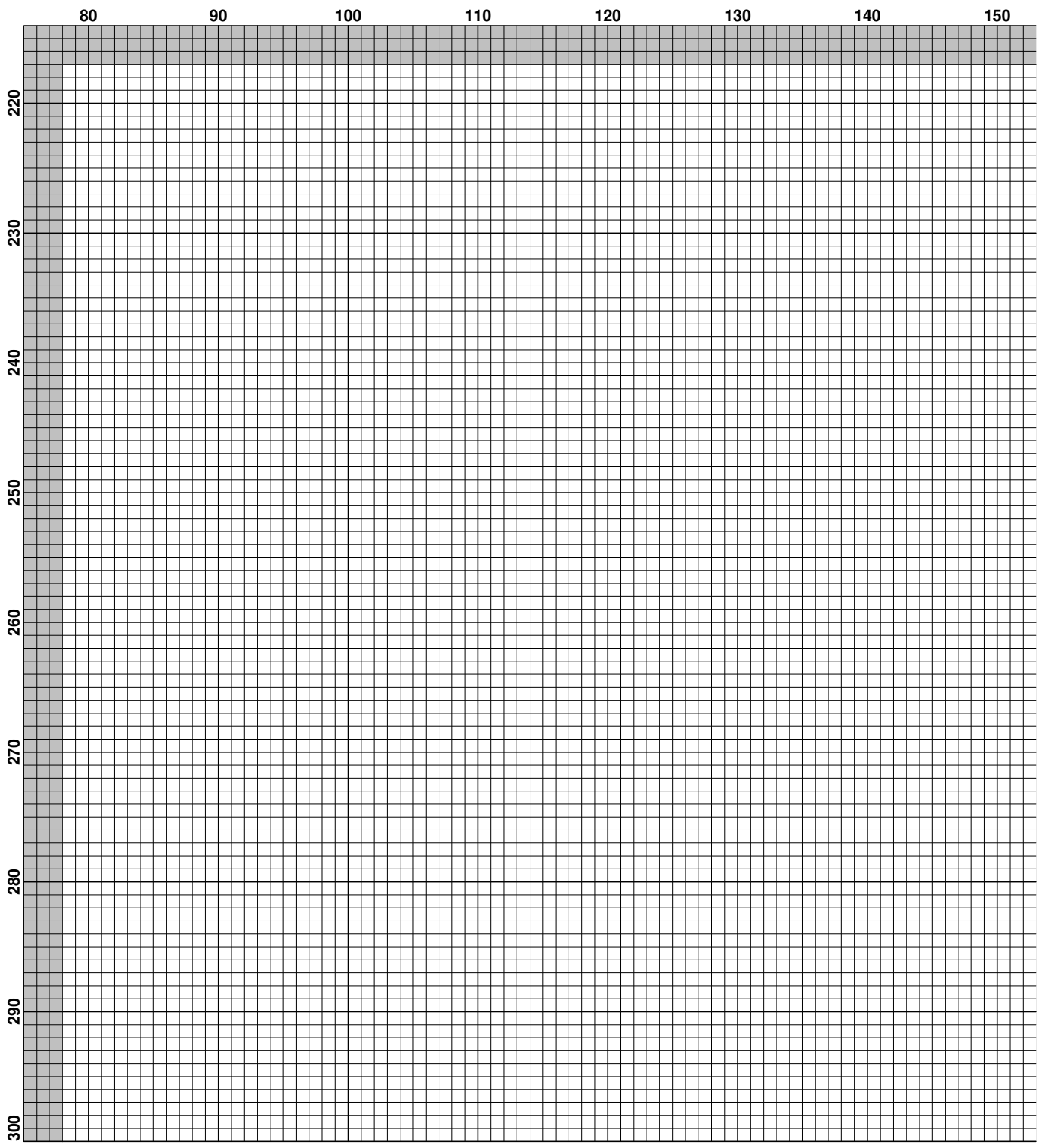
	230	240	250	260	270	280	290	300
110
120
130
140
150
160
170
180
190
200
210

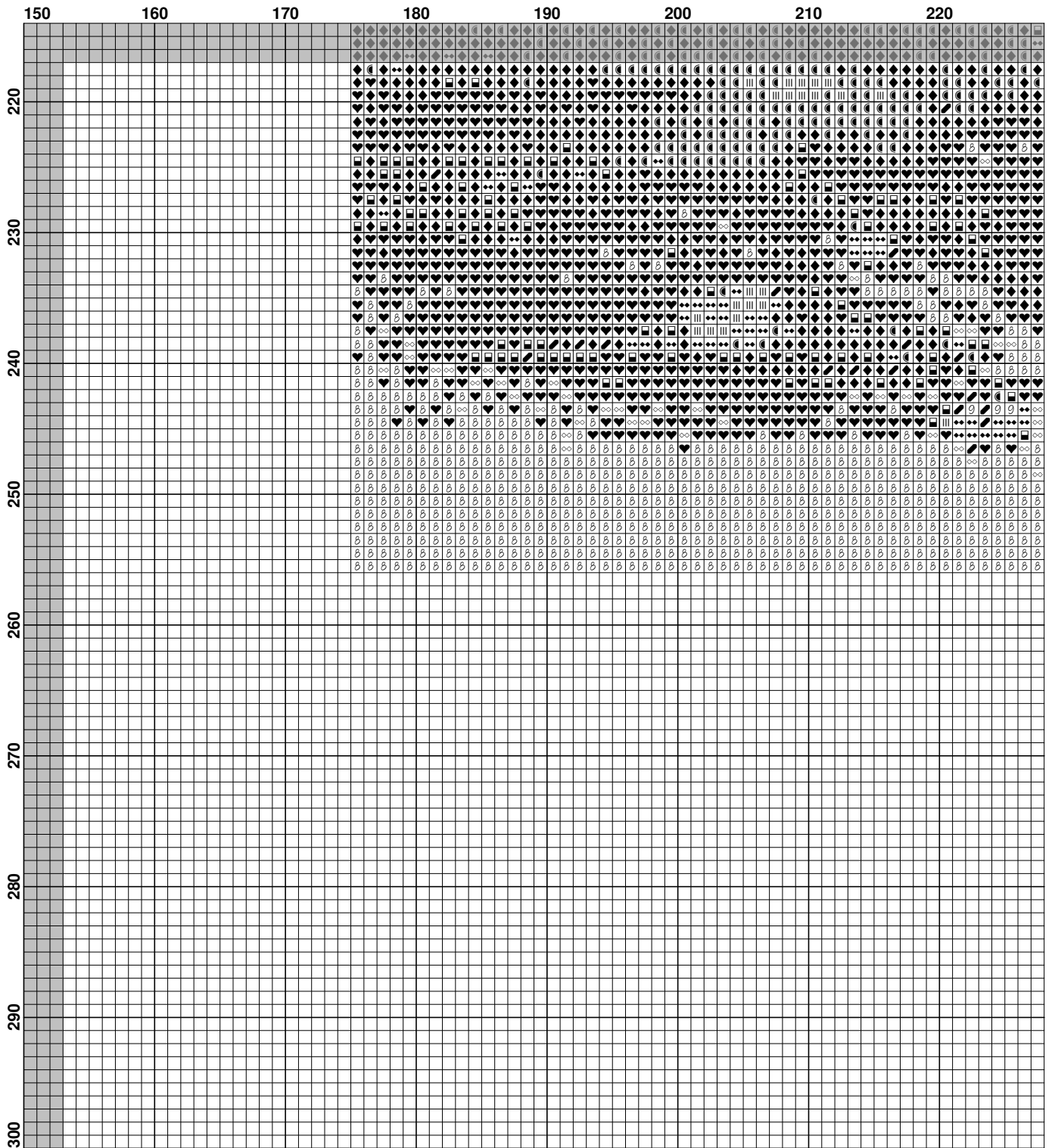
	300	310	320	330	340	350	360	370
110
120
130
140
150
160
170
180
190
200
210

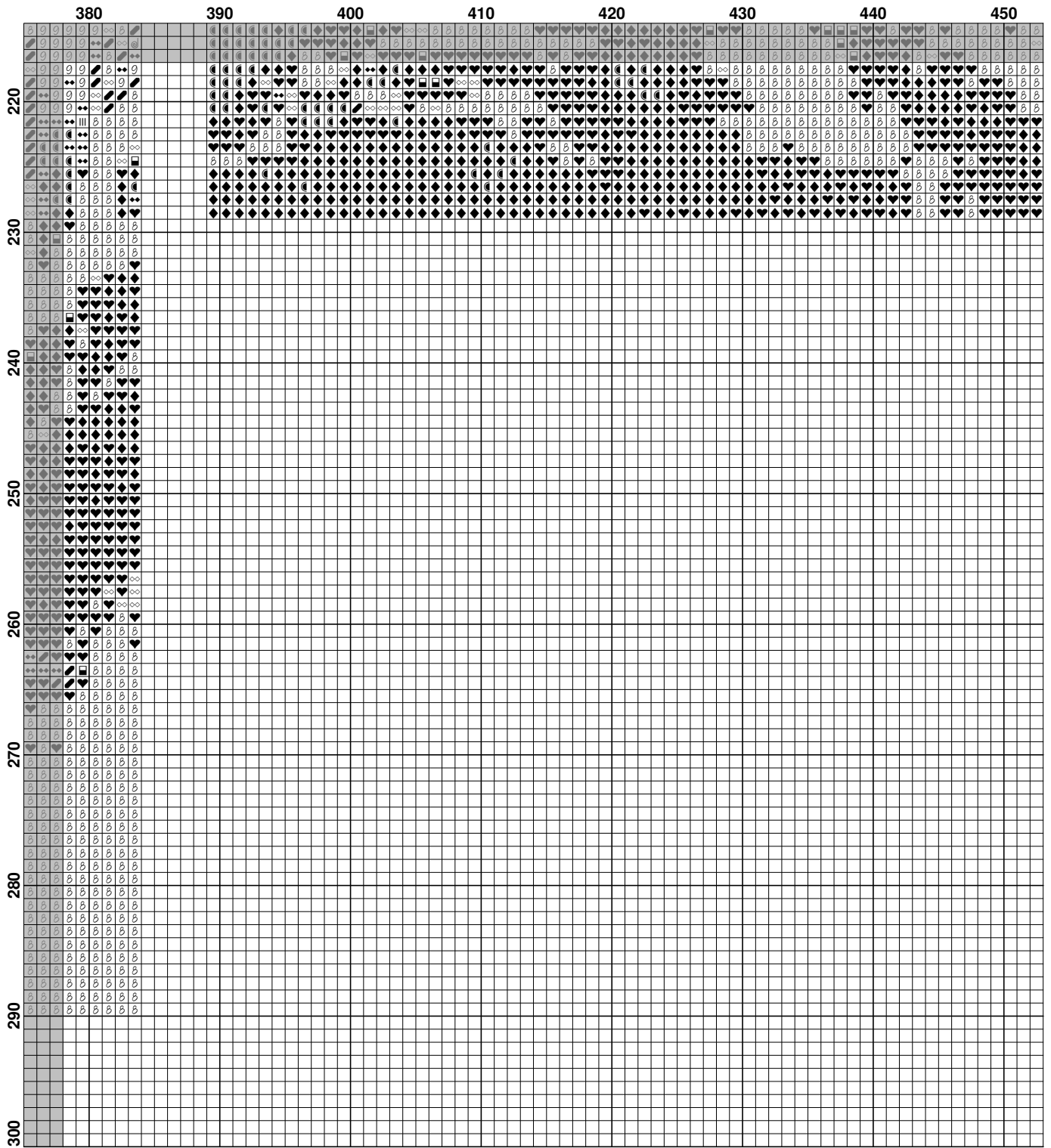


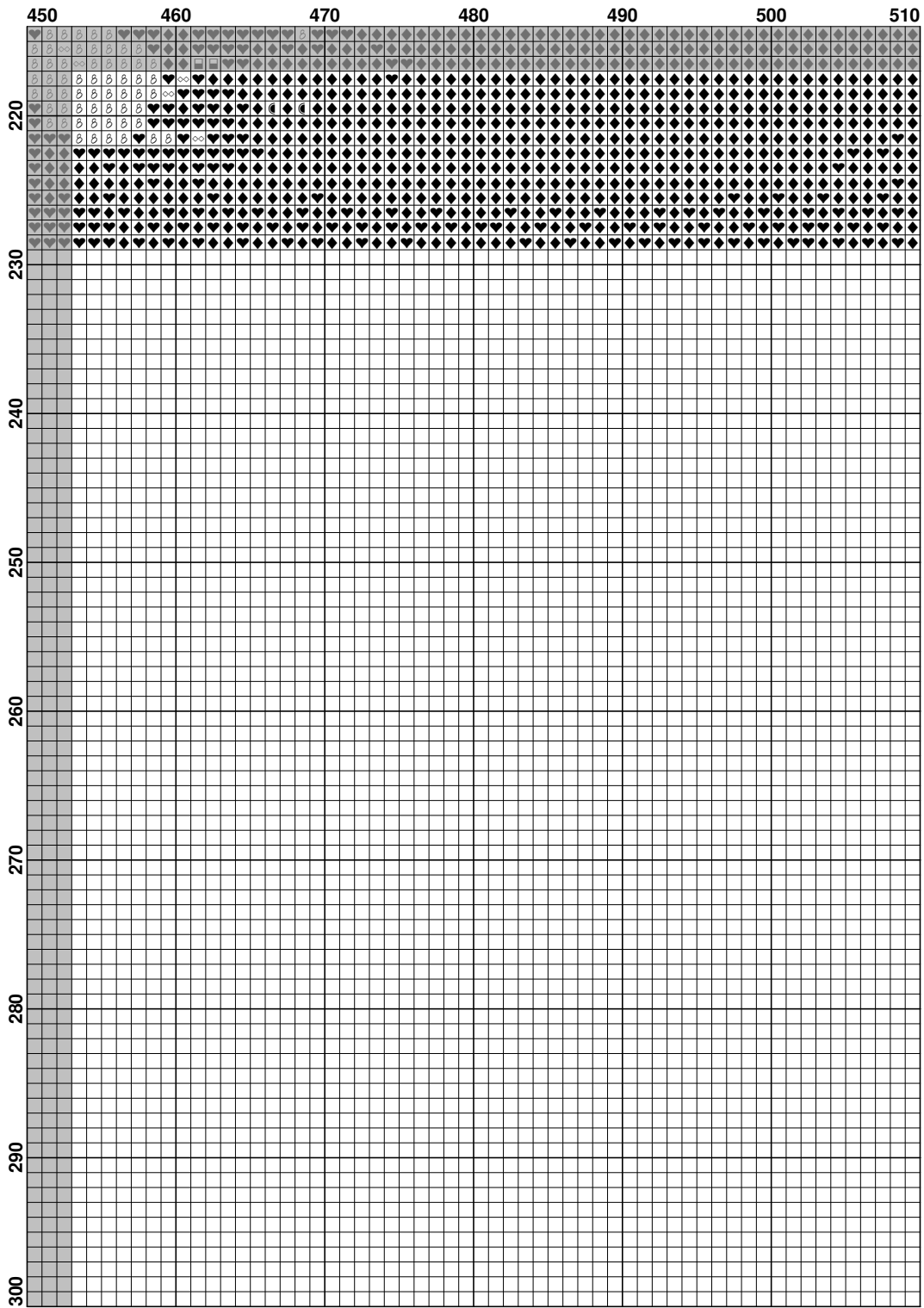












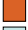


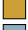













Fabric: Aida 14, White
505w X 286h Stitches
Size: 14 Count, 91.62w X 51.89h cm

Floss Used for Full Stitches:

Symbol	Strands	Type	Number	Color
	@	2	DMC 159	Gray Blue-LT
	\$	2	DMC 304	Christmas Red-MD
	8	2	DMC 310	Black
	♥	2	DMC 315	Antique Mauve-VY DK
	9	2	DMC 318	Steel Gray-LT
	☞	2	DMC 645	Beaver Gray-VY DK
	◆	2	DMC 720	Orange Spice-DK
	•	2	DMC 747	Sky Blue-VY LT
	:	2	DMC 775	Baby Blue-VY LT
	☾	2	DMC 783	Topaz-MD
	↓	2	DMC 932	Antique Blue-LT
	∞	2	DMC 3051	Green Gray-DK
	7	2	DMC 3823	Yellow-UL Pale
		2	DMC 3855	Autumn Gold-LT
	◆◆	2	DMC 3860	Cocoa
	☐	2	DMC 3882	Medium Light Cocoa
	†	2	DMC E317	DMC